

## Annual Meeting

The Trust welcomes all members and the public to attend its annual meeting scheduled for Thursday, November 10th at 7:00 pm in the Harvard Public Library's beautiful Volunteers Hall. There will be a small business portion of the meeting followed by a presentation by Dr Alex More of Harvard University. After the presentation, refreshments will be served.



Dr. Alexander More earned a PhD in History and History of Science at Harvard. More is deeply interested in the impact of climate change on the health of people, the environment and economic trends throughout history. He is co-author of a landmark study of pre-modern climate and currently holds a postdoctoral fellowship with the *Initiative for the Science of the Human Past* at Harvard, where he manages the initiative's project on the impact of climate change on population health and the economy in the last millennium.

Dr. More will speak on the impacts of climate change on the region's ecosystems.

*continued from page 1*



Photo: Herpetological Resource & Management (herpman.com)

Blandings Turtle sunning

dollar (1:1) from its Muller Conservation Collaborative (MCC) fund. This unique opportunity was created by the generosity of the Trust's late co-founder and long time benefactor, Erhart Muller. The MCC fund is dedicated solely to the purpose of protecting land for conservation purposes in Harvard.

Please help protect Horse Meadows Knoll; make a tax deductible, dollar-for-dollar matching contribution.

### Explore the trails!

Call us or send an email message if you're looking for:

Trail Guides \$10  
(also at the General Store & Town Hall)  
HCT baseball caps \$20

We're at:  
102 Prospect Hill Road  
(Fruitland's Museum)  
978-456-9292.org

## Note from the Executive Director



The preeminent Harvard biologist and evolutionary theorist, Edward O. Wilson, has calculated that a fifth of all plants and animals on Earth could become extinct or be doomed to this fate by 2020 unless significant measures are taken. Harvard is home to twenty of Massachusetts' rare and endangered species, but roughly half of the acreage that provides the necessary habitat for these plants and animals might still be lost. Habitat loss is one of the greatest threats to species the world over. With this in mind, HCT is actively working to protect 50 acres of Harvard's best habitat, home to three different rare species, referred to as Horse Meadows Knoll. As E.O. Wilson also notes, "the ability of people to devise initiatives fitted to the occasion, to the protection of local riverine woodland and endangered frog species to the support of rainforest wilderness reserves and international treaties, is strong and growing." We hope you will join us in this important occasion and support of the Horse Meadows Knoll initiative.

David Outman



HARVARD  
CONSERVATION  
TRUST

PO Box 31  
HARVARD, MA 01451

## Rural Route Patron or Boxholder



Printed on Recycled Paper

### Would you Like to Become a Member? Need to Renew?

Yes, I want to preserve the unique character of the town of Harvard by joining the Harvard Conservation Trust.

Membership is on a calendar-year basis and is tax deductible. Make check payable to "Harvard Conservation Trust" and send to PO Box 31, Harvard, MA 01451, or save a stamp and renew or join online at [www.HarvardConservationTrust.org](http://www.HarvardConservationTrust.org).

\$25 Individual     \$50 Family     \$100 Friend     \$250 Associate     \$500 Sustaining    Other

Name \_\_\_\_\_ Telephone \_\_\_\_\_

Address \_\_\_\_\_ Email \_\_\_\_\_

If your employer will match your contribution, please enclose the application form.

YES! I would like my donation matched 1:1 from the Muller Conservation Collaborative Fund!

The following committees of the Trust invite your participation. Please check any that interest you.

- |                                      |   |   |
|--------------------------------------|---|---|
| <b>Conservation</b>                  | <b>Stewardship</b>                            | <input type="checkbox"/> event planning         |
| <input type="checkbox"/> lands       | <input type="checkbox"/> trail maintenance    | <input type="checkbox"/> membership             |
| <b>Administration</b>                | <input type="checkbox"/> land monitoring      | <input type="checkbox"/> publicity              |
| <input type="checkbox"/> finance     | <b>Outreach and Education</b>                 | <input type="checkbox"/> website                |
| <input type="checkbox"/> fundraising | <input type="checkbox"/> walks & talks        | <input type="checkbox"/> photography            |
| <input type="checkbox"/> archives    | <input type="checkbox"/> tree-for-all         | <input type="checkbox"/> graphic design/posters |
|                                      | <input type="checkbox"/> newsletter & writing | <input type="checkbox"/> printing/mailing       |
|                                      | <input type="checkbox"/> education            |   |

NON-PROFIT  
US POSTAGE  
PAID  
PERMIT NO. 24  
Harvard, MA 01451

Celebrating 42 Years

Fall 2016



# Harvard Conservation Trust Legacy Review

Harvard Conservation Trust  
PO Box 31  
Harvard, MA 01451  
Tel: 978.456.9292  
[www.HarvardConservationTrust.org](http://www.HarvardConservationTrust.org)

Staff: David Outman, Julie Weigley

Trustees:

Peter Dorward, *President*  
Lucy Wallace, *Vice President*  
Robin Carlaw, *Secretary*  
Glen Frederick, *Treasurer*

Chris Candon, Tom Cotton, Pam Durrant,  
Mark Finnegan, Teresa Garti, Patricia Hurter,  
Jim Lee, Jonathan Panek, Marc Sevigny

Associate Trustees:

Abbe Alpert, Michael Ames, Britt Argow, Tim  
Arnold, Rebecca Cheney, Joyce Grant, Maureen  
Hopper, Peter Jackson, Ted MacMahon, Mary  
Maxwell, Mark Mikitarian, Margaret Nestler,  
David Neville, Brian Noble, Julie Nocka, Victor  
Normand, Jessie Panek, Paul Richards, Susan  
Tarrant, Michael Thornton

Trustees Emeriti: Francis Coolidge, Larry  
Finnegan, Edward Squibb

Honorary Trustee/Harvard Conservation Trust  
Librarian: Audrey Ball

This is a publication of the **Harvard  
Conservation Trust**.

Contributors to this issue:

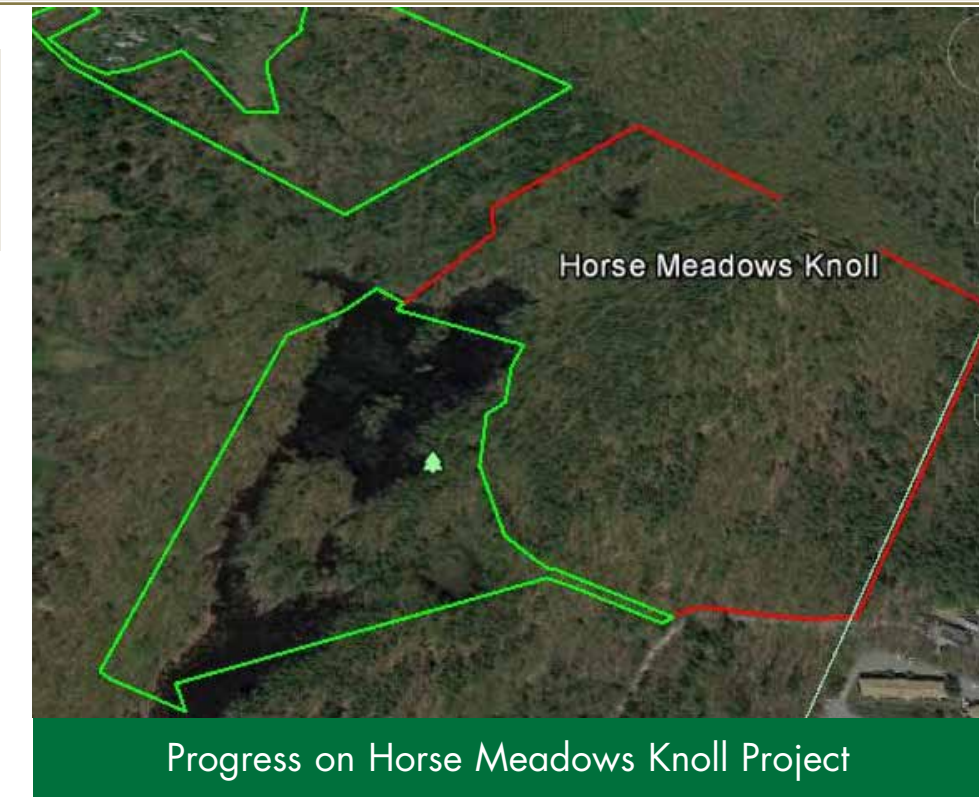
Abbe Alpert, Jim Lee, David Outman,  
Marc Sevigny

Design: Karen Polcaro

Membership is open to all. To join the Trust, send  
your tax-deductible check for dues with the  
remittance at the back page of this Legacy Review.  
Alternatively, renew or join online.

### Take the Trail Challenge

Anyone interested in taking the trail  
challenge should visit the Trust's web-  
site at [HarvardConservationTrust.org](http://HarvardConservationTrust.org) for  
details.



Horse Meadows Knoll

### Progress on Horse Meadows Knoll Project

For the past several months, the Trust, in collaboration with the various town agencies, has been making progress on the acquisition of the property called Horse Meadows Knoll, an historic and ecologically significant site encompassing about 50 acres. If the land transfer takes place, it will be a gorgeous and highly valuable addition to the roster of conservation land that the Trust has acquired or collaborated on in its 40+ year history. This exceptionally beautiful parcel has a strategic location adjacent to other permanently protected lands. Ecological assessment and mapping completed by The Nature Conservancy ranks the Horse Meadows Knoll property as the highest priority for protection in Harvard.

In order for this outstanding deal to be completed, several challenges must be overcome. The Trust and the town are pursuing a grant from the State for roughly half of the \$800,000 cost of the property. The Trust is counting on \$200,000 of town funds with the Trust funding the

remainder of the project costs. The Trust will have to take on all additional costs. The Harvard Conservation Trust is committed to matching any private donations to the Horse Meadows Knoll project dollar-for-



Photo: David Outman

Horse Meadows Reservoir

*continued page 3*

## Harvard Conservation Trust Upcoming Events

Thursday November 10 Harvard Conservation Trust Annual Meeting, Volunteers Hall of the HPL 7:00PM  
(Harvard Public Library)

January 1, 2017 Harvard Conservation Trust's Annual New Year's Day Walk, Location TBD 1:00PM

## How important is open space to the residents of Harvard?

According to Harvard's 2016 Open Space and Recreation survey, 93% of the respondents indicated they value the town's open space "extremely" or "very much". Many of the comments echoed the themes of, "it is what makes Harvard special" and, "it is why we moved here".

58% of the land in Harvard is currently open space – Town, State and Federal lands; HCT owned land; land with Conservation Restrictions or Agricultural Preservation Restrictions; and land in Chapter 61.

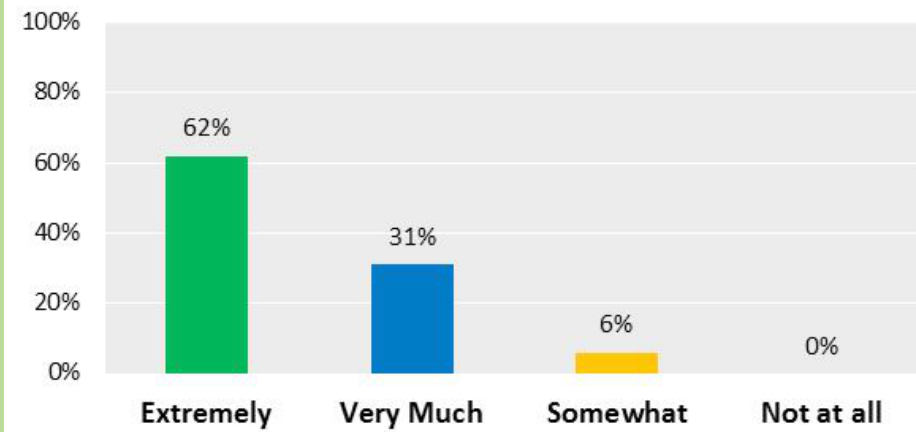
More than half of this open space is *not protected* – meaning it could be developed – and the majority is currently in agriculture. Harvard would be a very different place if this unprotected open space is developed.

Preserving Harvard's space is something the survey respondents overwhelmingly feel is very important, with 71% saying more open space should be protected. Furthermore, 80% of the survey respondents indicated the Town should establish an Open Space Fund. The Town's Conservation Commission, using Town and State funding, and the Harvard Conservation Trust, using private donations, have been working jointly to protect the town's open space for over 40 years. Please join the Harvard Conservation Commission and the Harvard Conservation Trust in preserving the unique character and natural resources of Harvard.

(The Open Space and Recreation Plan, including the entire survey results, can be found at <http://tinyurl.com/gtufv4u>)

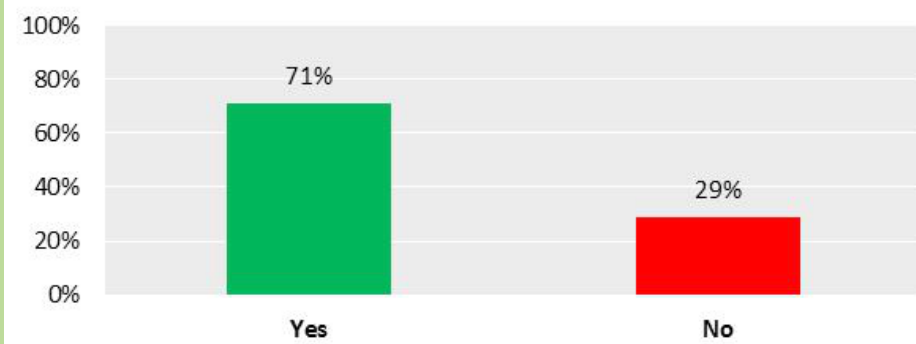
### How much do you value open space in Harvard?

Answered: 580 Skipped: 3



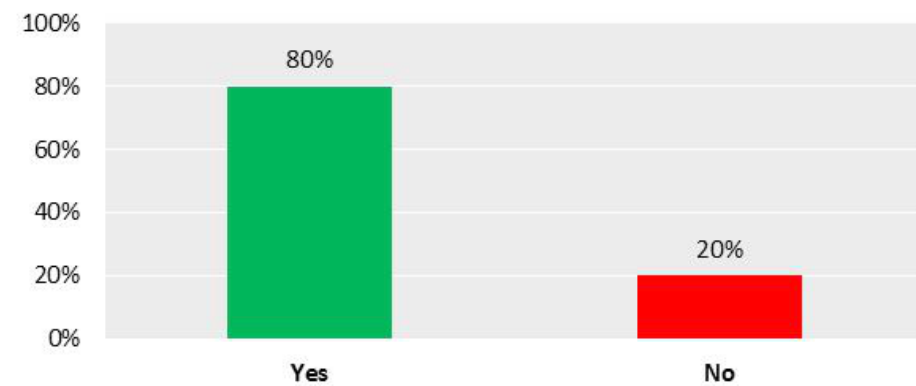
### Currently the Town has approximately 20% of its land permanently protected. Do you believe more land should be protected?

Answered: 546 Skipped: 37



### Should the TownMeeting establish an Open Space Fund for future land acquisitions?

Answered: 520 Skipped: 63



Please "Like" [facebook.com/HarvardConservationTrust](https://www.facebook.com/HarvardConservationTrust) and keep on top of what is happening with the Trust. Events will be posted and updates on land protection projects and more will keep you connected.

## The Mushroom Walk



The gloomy wet weather of Saturday, October 1st was perfect mushroom weather. A group of people joined mushroom enthusiast Al Ferry for a walk through Harvard's woods hunting for fungi and mushrooms. The finds of the day included Red Capped Russulas, *Armillaria mellea* (honey mushrooms), *Amanita citrina* (poisonous), *Galerina autumnalis* (poisonous). Knowing that mushrooms need wet weather, hunting for fungi on a drizzly day makes for excitement, being outdoors in such weather!"



Some of the open space Harvard residents have come to enjoy.

## Our land. Our Legacy.

In belonging to a landscape, one feels a rightness, an at-homeness, a knitting of self and world. — *Scott Russell Sanders*

## Community Harvest Project and HCT— Friends and Neighbors.

HCT volunteers have been helping harvest apples on CHP's 75-acre orchard on Prospect Hill. In addition to being across the road from HCT's office at Fruitlands, HCT is enthusiastic about helping CHP's mission of bringing fresh fruit and vegetables for hunger relief in the region. And CHP is helping to keep a historic orchard productive and protects valuable agricultural land and open space from development. Our synergies make us good friends and neighbors. For more information about volunteering at CHP, please visit [www.community-harvest.org/](http://www.community-harvest.org/)



Take a photo of your HCT apparel in your favorite outdoor space, and add it to our Facebook page. We love seeing HCT in beautiful places! Here is the HCT hat on the summit of Mount Monadnock during peak foliage season.

## Run for the Hills



Over 100 hundred runners/walkers lined up for the 7th Annual RFTH 5K trail run held at Harvard Park during a break in the freakish weather front that had blown through at the original start time. The start was delayed by 30 minutes because heavy rain poured down and fierce winds blew down branches and the tents along the course.

On the course, the top honors in the men's category went to Ian MacLellan of Somerville with a time of 19:47 minutes (5:39min/mile) and in the women's division Makayla Paige of Tewksbury with a time of 20:47 minutes (5:57min/mil).

For Harvard residents: The Delrossi family took the top spots in both the men's and women's division. Michael Delrossi(21:38min) and Melissa Delrossi(24:59min).

After the race, runners were treated to refreshments from Carlson Orchards and Harvard Sweet Boutique.

A special thank you to Sarah and Tim Arnold, and Caroline Golden for the use of their private fields for portions of the



Ian MacLellan of Somerville poses with his trophy after winning the race with a time of 19:47.



race course. Also to all the volunteers that helped with course prep, marshaling the course, and registration, headed up by David Neville, Jenn Russo, and Julie Nocka.

Also, special thanks to all the sponsors for this event!

**Exclusive sponsors:**  
Reddy Family Dentistry  
Shepherd Veterinary Clinic  
Whitney Lane Farms

**Gold Sponsors:**  
Ayer Oil  
Carlson Orchards  
Harvard Chiropractors  
New England Peptides

**Silver Sponsors:**  
Alexander Wealth Advisors  
Al Barbieri  
Jenn Russo Coldwell Bankers  
Cutler Woodworking  
Dennis Murphy Insurance  
Friot Water Service  
Fruitlands Restaurant

Nashoba Vision  
Pinard Landscaping  
Rollstone Bank and Trust  
David Ross Associates  
Valley Othropaedics  
Eriksons Grain Mill  
Shane Long Contractor  
Warren Design Build

Photos: Sam Jackson

## The Harvard Conservation Trust welcomes and thanks our newest members!

Randy and Jennifer Charland  
Gus Fraser  
Stephanie Hooper  
Andrew & Deborah Johnson  
Elaine Lazarus  
Silke and William Miller  
David and Leslie Neville  
Julianne North  
Charles Oliver and Dana Katter  
Craig and Mamie Reichenbach  
Patty Ruze  
Melody and Marcus Shipman

Become a member online at:  
[www.harvardconservationtrust.org/membership.htm](http://www.harvardconservationtrust.org/membership.htm)

Appreciating a commitment to conservation . . . **Won't you join us?**



## Can You Find The Creature In This Photo?

A perfectly camouflaged Screech Owl sits in a tree cavity awaiting its prey.